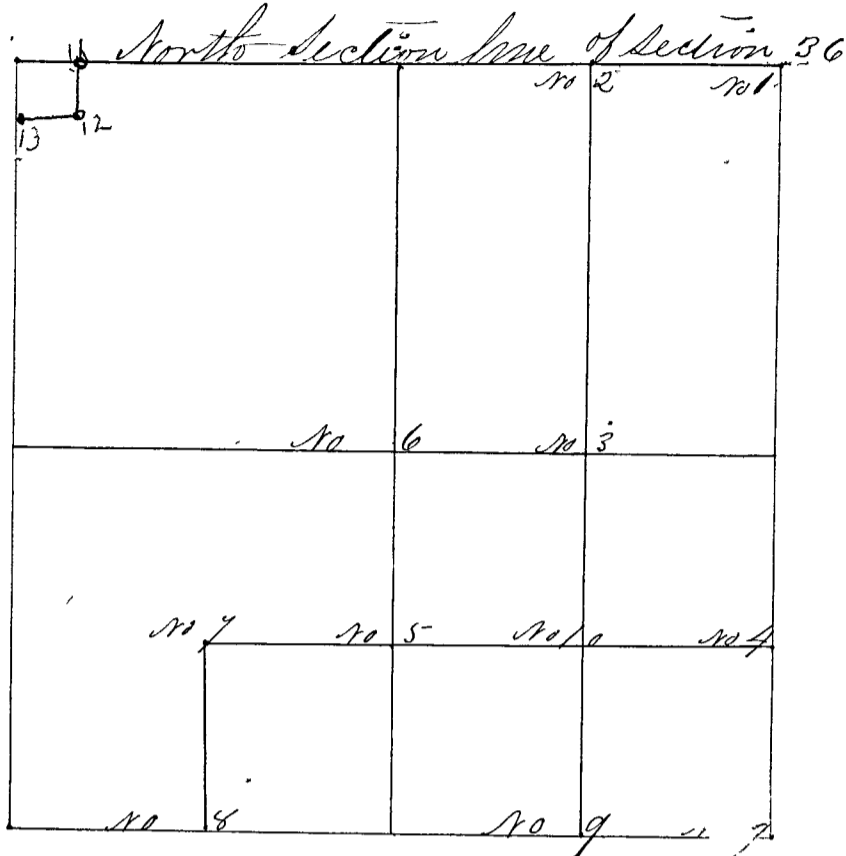


Surveyed by J. J. Peyton, Surveyor of Clay County Feb. 1853 and corners set from 1 to 5 Second survey March 1857 corners from 5 to 10 Bearings taken at 5th W Variation



- Corner No 1 corner of section 25 and 36 on Range line
- " " " a Sand Stone marked S 25 S 36 Prairie
- " No 2 Sand Stone marked 1/8 S no bearings
- " No 3 Sand Stone marked 1/8 S
- " " " J. Oak 5 S 36 E 20 1/2
- " " " do 4 N 3 1/2 E 115-
- " No 4 Sand Stone marked 1/16 S
- " " " J. Oak 36 N 88 W 76 1/2
- " " " Hickory 14 S 76 W 115-
- " No 5 Sand Stone marked 1/16 S
- " " " J. Oak 4 S 63 W 4
- " " " do 5 S 77 E 19
- " No 6 Sand Stone marked 1/8 S
- " " " J. Oak 10 N 64 E 25 1/2
- " " " do 4 S 72 W 8
- " No 7 Sand Stone marked 1/16 S
- " " " Hickory 5 West 9 1/2
- " " " B. Oak 6 S 81 E 15-
- " No 8 Sand Stone in Prairie marked 1/8 S 79 Poles 6 1/2 S
- " " " from S W corner of section 36
- " No 9 Sand Stone marked 1/8 S,
- " " " Hickory 13 N 20 E 32
- " " " do 13 N 14 1/2 W 54
- " No 10 Sand Stone marked 1/16 S
- " " " B. Linn 13 N 86 W 17 1/2
- " " " do 12 S 88 E 16 1/2