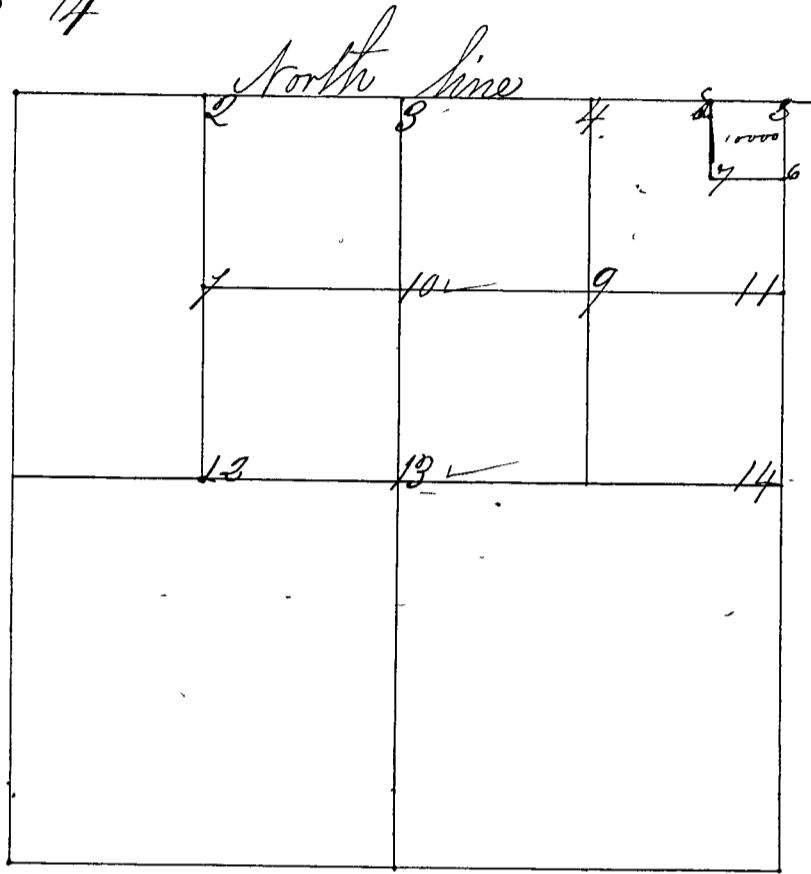


Surveyed by S. F. Feril, S. L. L., and, commenced April 7th 1863 agreeable to notice given in "Clay County Democrat" Vol. 6 Nos. 12, 13 and 14 all parties met - and adjourned until April the 30th 1863 survey made April the 30 and May the 1st 1863 chain carriers Michael McMillan & N. Hardesty all sworn as the Law directs and corners set from 1 to 14



- " No 1 a "niggerhead" 6 L.
- " " " W. S Stone 8 L. N 13 1/2 E 25 lks
- " " " a do 13 L. W 25 "
- " No 2 a S Stone 8 long
- " " " Wit Beech 18 N 31 1/2 E 22 lks
- " " " a. W Oak 40 S 63 1/2 W 36 "
- " No 3 a niggerhead 12 long center N. line
- " " " Wit. a W Oak 42 L. N 6 1/2 W 35 "
- " " " a do 36 " N 21 E 43 "
- " No 4 a S Stone 14 long
- " " " Wit a stone 8 long E 32 lks
- " No 5 a "niggerhead" 15 in by 6 in cor 1-2
- " " " Wit a S Stone 8 L. S 62 1/2 W 21 lks
- " " " a. do, 8 L. N 83 1/2 E 20 "
- " No 6 a S Stone 16 long
- " " " a stone 8 long W 40 lks
- " No 7 S Stone 16 L.
- " " " a Stone 12 L. W 20 lks
- " " " a do 6 L. E 20 "
- " No 8 S Stone 10 long
- " " " a Stone 6 L. E 10 "
- " " " a do. N 10 "