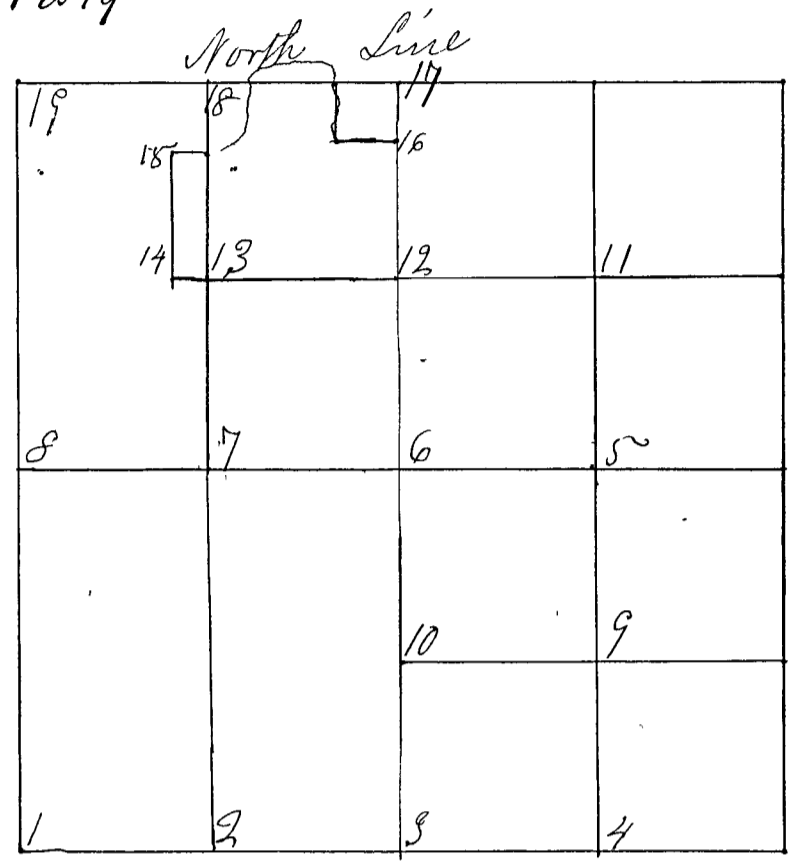


SECTION *Nine* (9), TOWNSHIP *Thirteen*

Surveyed by S. F. Terrell & Co. And March the 31st April the 1st & 2nd 1863 agreeable to notice given in ^{3rd} Clay County Democrat vol 6 no. 12, 13 and 14 chain carrier sworn as the Law directs corners set from 1 to 19



- Corner No 1 a Sand Stone 15 long 2 in thick
wit. a Stone 6 30 lbs
- " " " a Do 13 9/2 6 30 lbs
- Cor No 2 Sandstone 15 long 4 1/2
wit a Sand Stone 8 long 1 1/2 lbs
- Cor No 3 1/2 S Niggerhead 12 long wit
Witness a Niggerhead 12 long 8 24 lbs
- Corner No 4 a Niggerhead 8 long 5 in thick
wit a niggerhead 6 1 1/2 20 lbs
- Cor No 5 Sandstone 10 long
wit Sand Stone 8 long 1 1/2 20 lbs
- Cor No 6 a Sand Stone Center section waked 1/2 S
wit a Sandstone 6 long 8 80 lbs
- Corner No 7 a Niggerhead 12 in long 3 in thick
wit a niggerhead 12 long 6 20 lbs
- Corner No 8 a Sandstone 12 long 1 1/4 S
wit a S Stone 6 20 lbs
- Cor No 9 a Niggerhead 10 long
Witness a Sand Stone 10 1 1/2 20 lbs
- Cor No 10 a Sand Stone 12 long
wit a Sand Stone 6 long 6 20 lbs
- Corner No 11 a Niggerhead 10 long
Witness a W Oak 20 di 8 4 1/2 19 lbs
- Cor No 12 a Sandstone 16 long
Witness a Sandstone 8 long 4 1/2 20 lbs