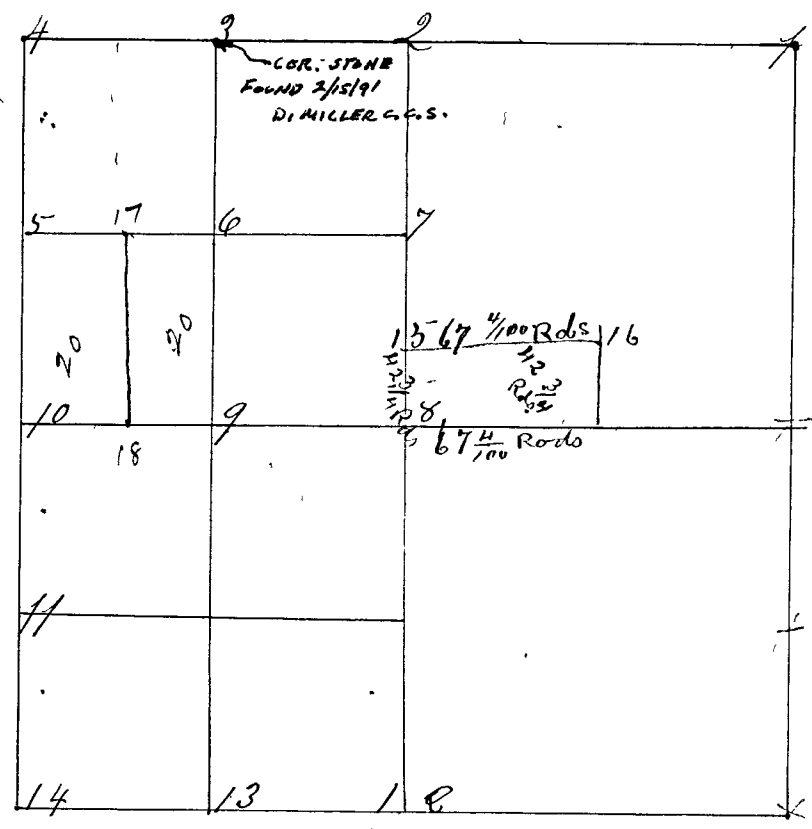


Surveyed by John H. Davis S. C. C. April 23rd & 24th 1860
 agreeable to notice published in Clay County Democrat. Vol. 3.
 nos. 10, 11 & 12 B. G. Wheeler & John Baker chain carriers
 first day and Mr. Houbert & Jas. A. Winn 2nd day all sworn
 as the Law directs corners set from 1 to 14.



- Corner No. 1 N.E. corner S Stone 2 3 3 19, 8 11
 (Witness Stones) S Stone marked + 1860 N 72 W 25 lks
- " " " " " " S Stone " + " - S 72 E 30 "
- Corner No. 2 S Stone lettered 4 S
 (Witness) " Niggerhead" + N 14 E 12 lks
 (Stones) " 100 " S 87 W 20 "
- Corner No. 3 Sand Stone 1/8 S
 (Witness) S Stone + S 25 W 20 "
 (Stones) S Stone " S 68 E 35 E 20 "
- Corner No. 4 N.W. cor. sec. S Stone 3 3 3 4 8 9, 8 10
 (Witness) S Stone 8 in long S N. N 71 E 18 lks
 (Stones) S Stone marked S. S 41 W 14 "
- Corner No. 5 Sand Stone 1/8 S
 (Witness) S Stone + S 48 W 30 lks.
 (Stones) S Stone cross, N 45 E 22 "
- Corner No. 6 Middle N.W. 1/4 S Stone 1/8 S
 (Witness) S Stone, cross, S 87 E 25 lks.
 (Stones) S Stone " N. E 30 E 25 lks
- Corner No. 7 S. Stone 1/8 S.
 (Witness) " Niggerhead 5 in long S 10 E 20 lks
 (Stones) " " 6 " " S 85 W 25 lks
- Corner No. 8 Center of the Sec. S Stone 1/4 S
 (Witness) Pine Stone, cross, N 29 E 30 lks
 (Stones) " " " " " " " " " " " "