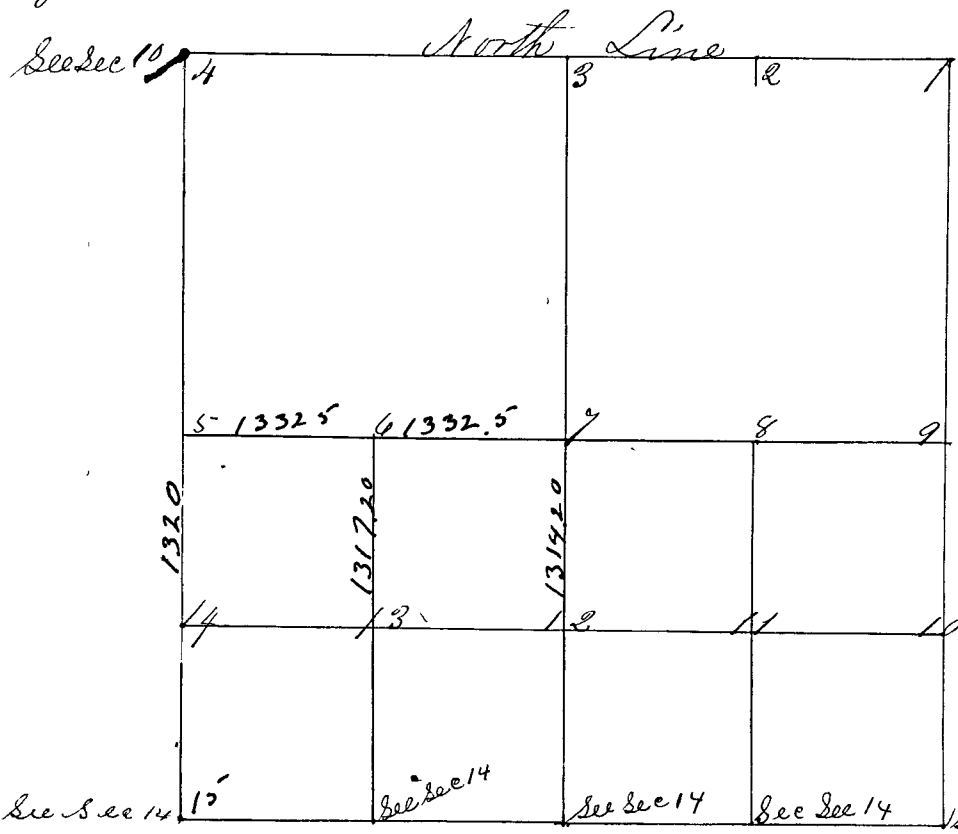


Surveyed by John H. Davis County Surveyor to, to, April 19th 20th & 21st 1860 Notice given by Publication three weeks in "Day County Democrat" Vol. 3 Nos 10, 11 & 12 J. L. Compton and Saml Davis ch-carriers 1st day and Mrs Myers & Saml Davis 2nd day Michael Hook and Oliver Snow 3rd day All sworn according to law corners set from 1 to 13



Corner No 7 center of Section 8 Stone 1/4 8
(Witness Stones)
Wiggerhead N 20° E 57 lks
" N 14 W 54 1/2 "

- Corner No 1 N.E. cor of the section 8 Stone 51.52 811 812
" " " (Witness) a 8 Stone S 53° E 33 3/4 lks
- " " " (Stones) Sand Stone N 53° W 34 3/4 lks
- Corner No 2 Sand Stone 1/8 S
" " " (Witness) Wiggerhead S 16° W 10 1/2 lks
" " " (Stones) " East 16 "
- Corner No 3 1/2 mile corner on inside Wiggerhead 74 S Original bearings found
" " " { Witness } Wiggerhead 7 in long S 64° E 16 lks
" " " { Stones } " " 6 " " S 71° W 24 "
- Corner No 4 Sec. Section No 10 for this corner
- Corner No 5 1/2 mile cor. on W side Sec. 8 Stone 1/4 S Original bearings found
" " " (Witness) Sand Stone S 42° 30' E 40 lks
" " " (Stones) Sand Stone N 34° W 48 1/2 lks
- Corner No 6 Sand Stone 1/8 S
" " " (Corner 7 Sec 8) (Witness) Sand Stone crossed S 41° W 46 lks
" " " (Side of map) (Stones) Sand Stone " S 82° W 45 "
- Corner No 8 Sand Stone 1/8 Section
" " " { Witness } Line Stone S 46° W 17 1/2 lks original bearings
" " " { Stones } Wiggerhead " S 77° E 20 lks
- Corner No 9 1/2 mile corner on E side. 8 Stone 1/4 S Original bearings found
" " " { Witness } Sand Stone N 41° W 36 lks
" " " { Stones } Sand Stone N 64° E 35 lks