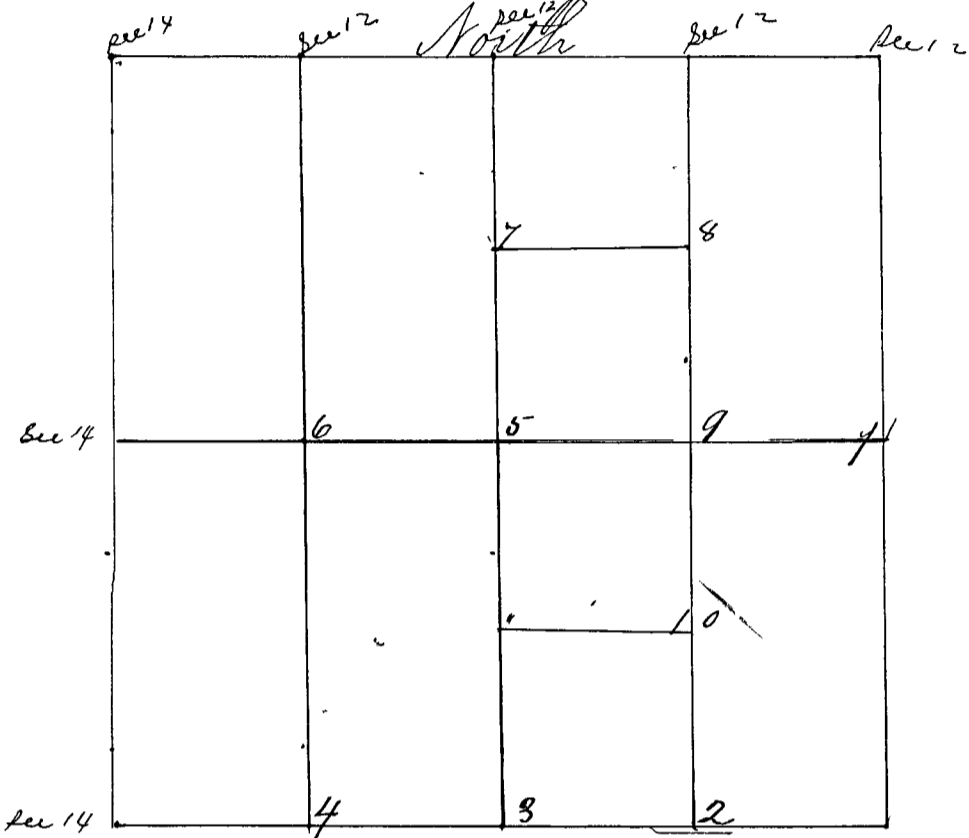


Surveyed by *P. J. Fisher* Surveyor of *Clay County Indiana*
May the 14th 15th and 16th A.D. 1867, after three weeks notice
 previous to the Survey given in the "*Weekly Aurora Borrealis*"
 in Vol. ten nos. 17, 18 and 19. Chain carriers, arman, and
 flagman all sworn as the Law directs. Corners established
 from one to ten (10) Bearings taken at *4° 45'*



- Corner 1 *E 1/2 M. cor a Sand Stone 24. m 1/2 S 13*
 Witnes. *White Oak 18 N 83 W 47 1/2*
Jack Oak 18 S 54 W 62
- Corner 2 *a Sand Stone 24 in 1/4 S 13 T 13 R 7*
 Witnes. *a Mulberry 14 S 62 1/2 W 33 1/2*
a Wild Cherry 16 N 5 W 95 1/2
- Corner 3 *a Sand Stone 14 in m 1/2 S 13*
 Witnes. *a Sand S. 12 N 43 E 50*
a Niggerhead N 14 W 57
- Corner 4 *a S. S. 16 in marked 1/4 S 13.*
 Witnes *a S. S 10 in N 36 W 45*
a Long Nig. h'd. N 51 E 11
- Corner 5 *center of sec. a S S 12. m 1/4 S. 13 T 13 R 7.*
 Witnes *a Beech 10 N 7 E 22 1/2*
a Hickory 30 S 81 1/2 W. 17 1/2
- Corner 6 *a Nig. h'd. 12 in m 1/4 S 13*
 Witnes *a Nig. h'd. N 5 1/2 W 20*
a Burr Oak 24 S 9 1/2 E 35
- Corner 7 *a S Stone 24 in m 1/4 S 13*
 Witnes *a Black Gum 20 S 39 1/2 W. 27 1/2*
an Oak 16 N 39 W. 33 1/2
- Corner 8 *a Sand Stone 18 in m 1/4 S 13.*