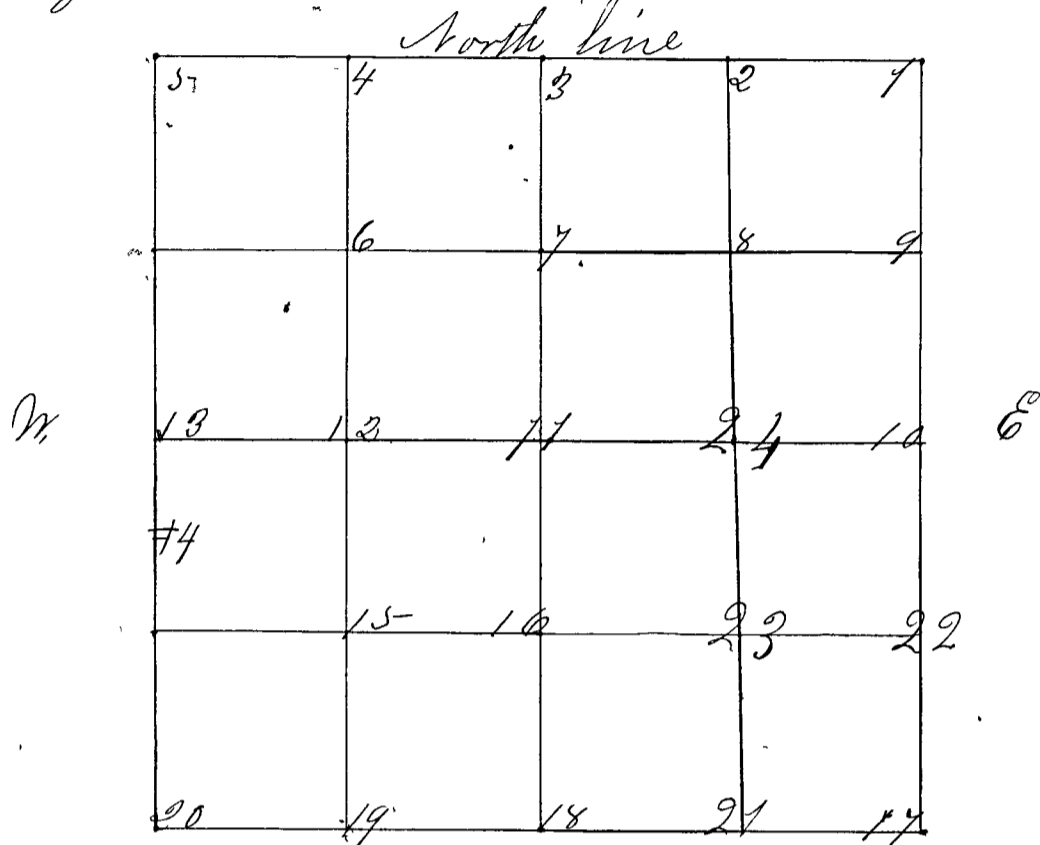


Surveyed by John H. Davis Surveyor of Clay County Indiana April 17<sup>th</sup> & 18<sup>th</sup> 1860, according to notice published in "Clay County Democrat" Vol. 3 No. 10. 11 & 12 (3 weeks) of L. Webster & C. L. Laughlin chain carriers, sworn according to Law. corners set from 1 to 20.



- Corner No 1 N.E. corner of the Section & Stone S 11 S. 12 S 13 & 14  
 " " " Witness, Sand Stone crossed S 88° 30' W 31 Lks  
 " " " Stones, Sand Stone " S 71° E 29"
- Corner No 2 Middle of the N.E. 1/4 on N side & Stone 1/8 S.  
 " " " Witness, Sand Stone S 79° W 28 Lks.  
 " " " Stones, Sand Stone S 5° W 13 1/2 "
- Corner No 3 1/2 mile corner on N side original bearing found, & Stone 1/4 S.  
 " " " Witness, Niggerhead S 70° W 24 1/2 Lks  
 " " " Stones, & 8 Stones S 63° E 27"
- Corner No 4 Middle N.W. 1/4 on N. side Nigger head 1/8 S.  
 " " " (Witness) Niggerhead crossed N 19° W 17 Lks  
 " " " (Stones) " " S 47° W 9"
- Corner No 5 N.W. cor of the Sec. Original bearing found Nigger head S 10. 11.  
 " " " Witness, Nigger head N 58° E 6 Links  
 " " " Stones, Blue Stone N 60° W 12 "
- Corner No 6 Middle N.W. 1/4 S Stone 1/8 S.  
 " " " Witness, Blue Line Stone S 44° E 6 1/2 Lks  
 " " " Stones, " " " S 74° W 7 1/2 "
- Corner No 7 Sand Stone 1/8 S  
 " " " Witness, Flint Stone N 51° W 47 Lks.  
 " " " Stones, " " " S 3 W 25 3/4 "
- Corner No 8 Middle N.E. 1/4 & Stone 1/8 S  
 " " " Witness, Sand Stone S 70° W 30 1/2 Lks  
 " " " Stones, " " " S 10° W 20 "