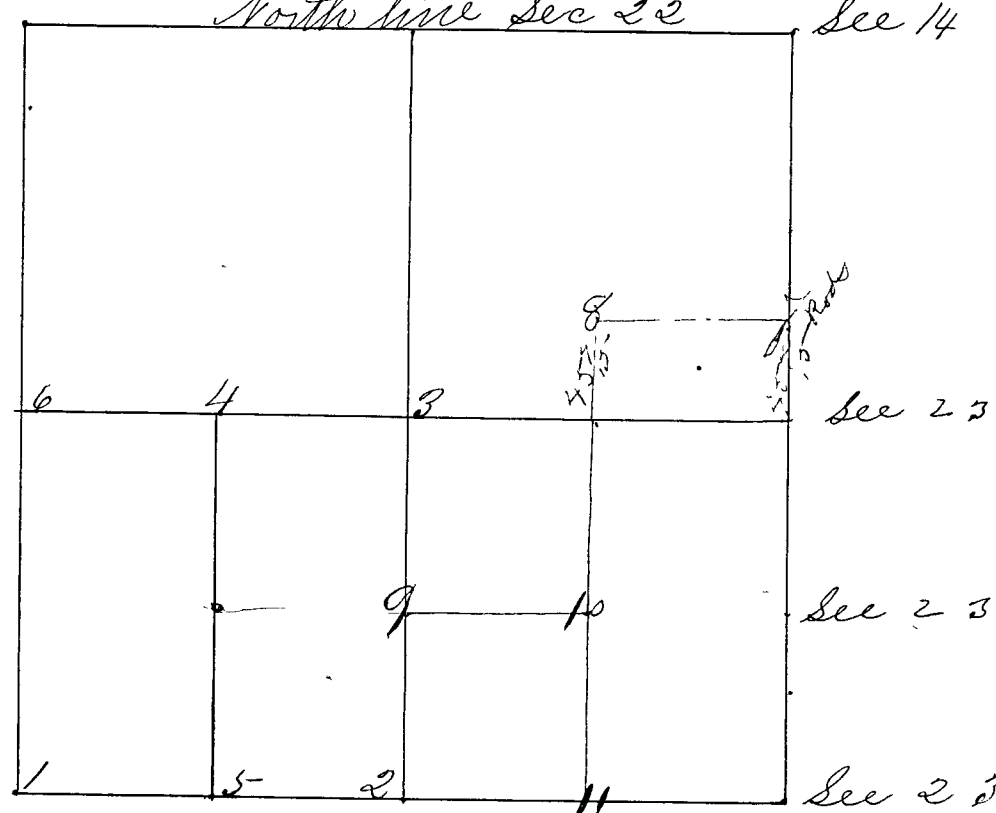


Surveyed by Peter T. Luther S. C. C. May the 14th A.D. 1868 after notice being given to some and consent of others that were interested, Joseph Robinson & W. F. Anderson chain carriers, S. L. Laughlin, flag man Benjamin V. Rector armorer, all sworn as the Law provides corners set from 1 to 6 Bearings taken at 5th Var. North line Sec 22 See 14



- Corner 1 S.W. corner found "Origin at trees" set a ^{hard stone at bottom} 33 10 m m 8 21. 22. 27. 28
 " " " a Beech 10 N 70 E. 28 1/2 Lks.
- " " " a Do. 14 N 36 E W 35 "
- Cor 2 S E set at "equi. dist." no old trees found a ²²⁻²⁴ 8 1/2 m 1/2
 " " " a Pin Oak 30 N 6 W 70 "
- " " " a White Oak 36 S 20 E 105 "
- Cor. 3 center of Sec. a S. S. 15 in m 1/4 S 22 with a hard ^{stone at bottom}
 " " " a Stone N 35 W 25 "
- " " " a Do. S 35 E 26 "
- Cor. 4 a Sand Stone 18 in m 1/8
 " " " a Stone East 27 "
- " " " a Do. S 56 3/4 E 34 "
- Cor 5 a "White Flint" 11 in m 1/8
 " " " a Sugar 15 N 57 W 68 "
- " " " a Do. 15 S 74 1/2 W 92 "
- Cor 6 W 1/2 a Sand Stone 17 in 1/4 S

Old original Beech standing
 Witness my hand and official seal
 This May 16th 1868,
 Peter T. Luther,
 S. C. C.