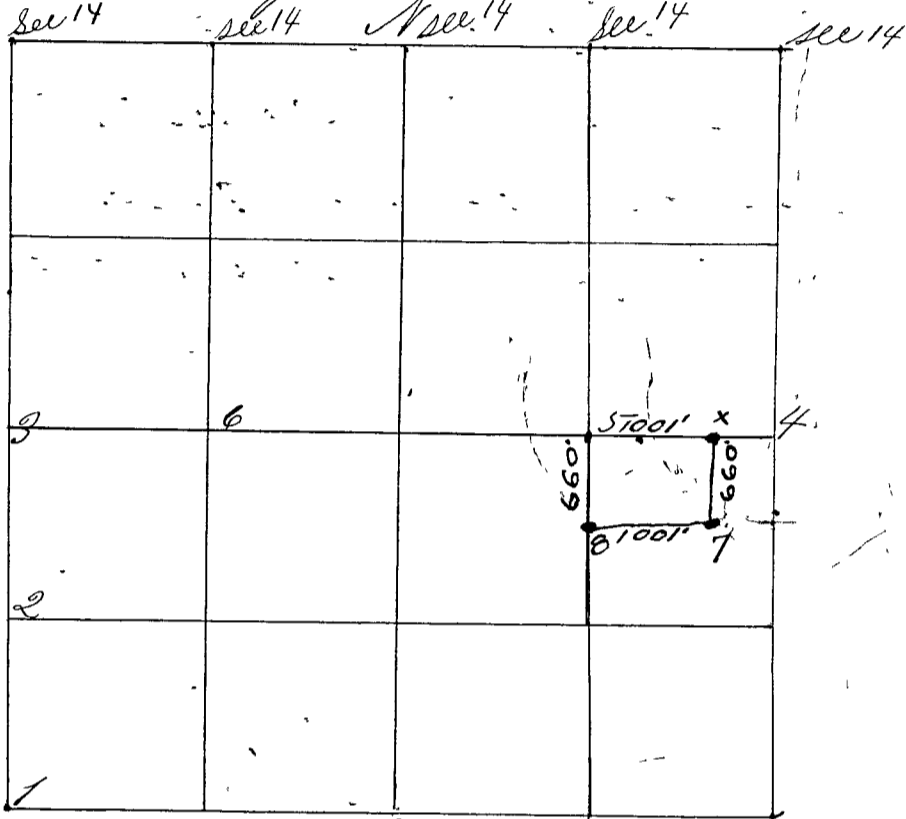


Surveyed by Peter F. Luther S. & Co. May 12th 1868 after the days written given by S. M. Stewart. (Written notice given by S. M. Stewart to all save one "nonresident" adjoining cov one). W. F. Anderson Benjamin V. Gector chain carriers, C. S. Laughlin flagman. All sworn as the Law directs. Corners set from one to sit. Bearings taken at 4:30 P.M.



- Cov 1 S. W. cov found old stump set at S. S. 15 m 22, 23, 26, 27 21327
- " " " a White Oak 30 S 19 E 104 Lks.
- " " " a Stone S 43 1/2 W. 56 "
- Cov 2 1/4 m N. of 1 a Sand Stone 18 m 1/8
- " " " a Stone N 62 E 48 "
- " " " a do. S 55 1/2 E 47 "
- Cov 3 N 1/2 (O. B.) found a "Niggerhead" 1/4 m 1/4.
- " " " a Beech 24 S 46 W 30 1/2 "
- " " " a Sugar 18 N 64 3/4 E 44 "
- Cov 4 E 1/2 (dug out old roots) set S. E. 17 in m 1/4 S 23-24
- " " " a Stone N 51 1/2 W. 40 "
- " " " a do. S 43 1/4 W 52 "
- Cov 5 1/4 m W of 4 a Flint Stone 12 m 1/8 "
- " " " a Beech 12 N 88 E 9 "
- " " " a Hickory 20 S 45 E 15 "
- Cov 6 1/4 m E of 3 a Sand Stone 15 m 1/8
- " " " a W Oak 20 N 27 E 79 "
- " " " a Beech 15 S 28 E 38 "

E. S.

Witness my hand and official seal
This May 16th A.D. 1868

Peter F. Luther
S. & Co.