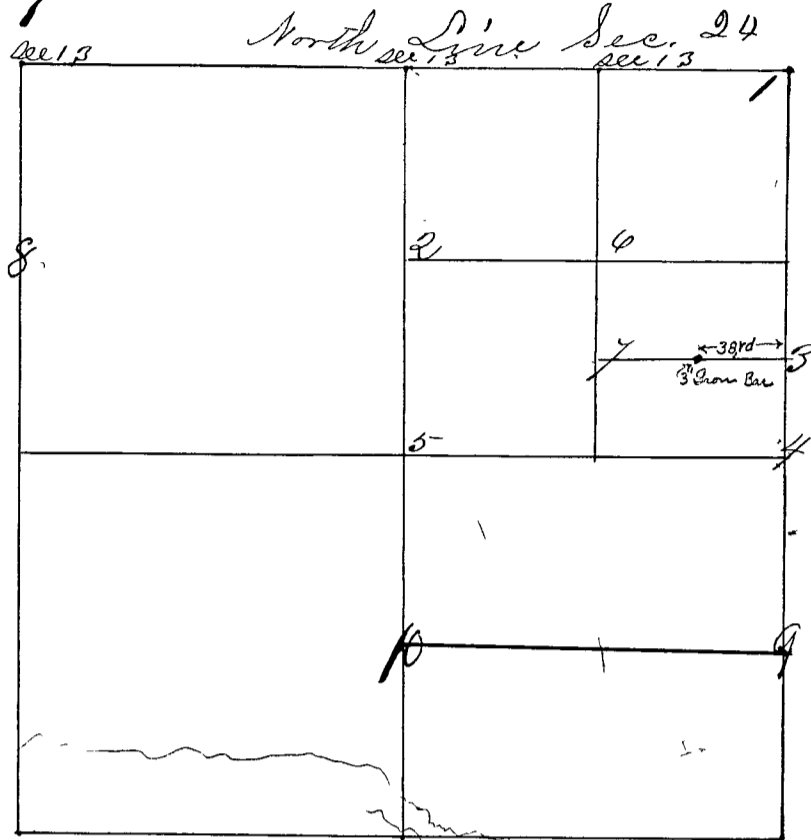


Surveyed by Peter T. Luther S. C. C. April 21<sup>st</sup> 1868 by consent of St. W. Sampson, Silvio Weaver, and Thomas Triplett corners from 1 to 7 were established, corners set & Bearings taken at 4:45<sup>am</sup>



- Cor 1 N.E. corner "O.B. found" a flint stone 20 313-24
- " " " a White Oak 24 S 49 E 125-125"
- " " " a Do. 20 N 25 E 56 1/2 "
- Cor 2 a Lime Stone 15 in 20 1/8 for which
- " " " a Black Walnut 14 N 40 1/2 E 41 "
- " " " a Red Oak 14 N 35 W 20 "
- Cor 3 40 Rods & 1 link N of 1/2 a Stone 12 in 20 x
- " " " a Beech 12 S 58 W 28
- " " " a White Oak 15 N 83 W 49 1/2 "
- Cor 4 E 1/2 "O.B. found" a Stone 20 14 24
- " " " a White Oak 36 S 54 E 58 1/2 "
- " " " a Beech 70 N 57 W 73 1/2 "
- Cor 5 Center of section a Lime Stone 24 20 1/4 24
- " " " a Red Oak 14 S 23 1/2 W 66 1/2 "
- " " " a Sugar 18 N 10 1/2 W 64 "
- Cor 6 Center of N.E. 1/4 a Sand Stone 22 in 20 1/6
- " " " a Hickory 4 S 27 W 20 1/2 "
- " " " a White Oak 30 N 52 1/2 W 140 "
- Cor. 7 40 Rods & 3 1/2 links south of 6 a Sand Stone 18 20 x
- " " " an Apple tree 8 N 8 1/4 E 7 1/2 "
- " " " a Balm, Liliard 13 S 20 E 76

E. S.

P. T. Luther Surveyor  
Clay County,

Further Surveyed by Wm. Lewis Surveyor Clay Co Ind

Cor No 8 Middle of West line N W 1/4 Sand Stone 12 in long 20 in wide } Sand Stone 25-  
Set by consent of G. Triplett & Easton } " " 11 N 55 E 80.  
Wm. Easton & G. Triplett }  
Wm. Easton & G. Triplett }