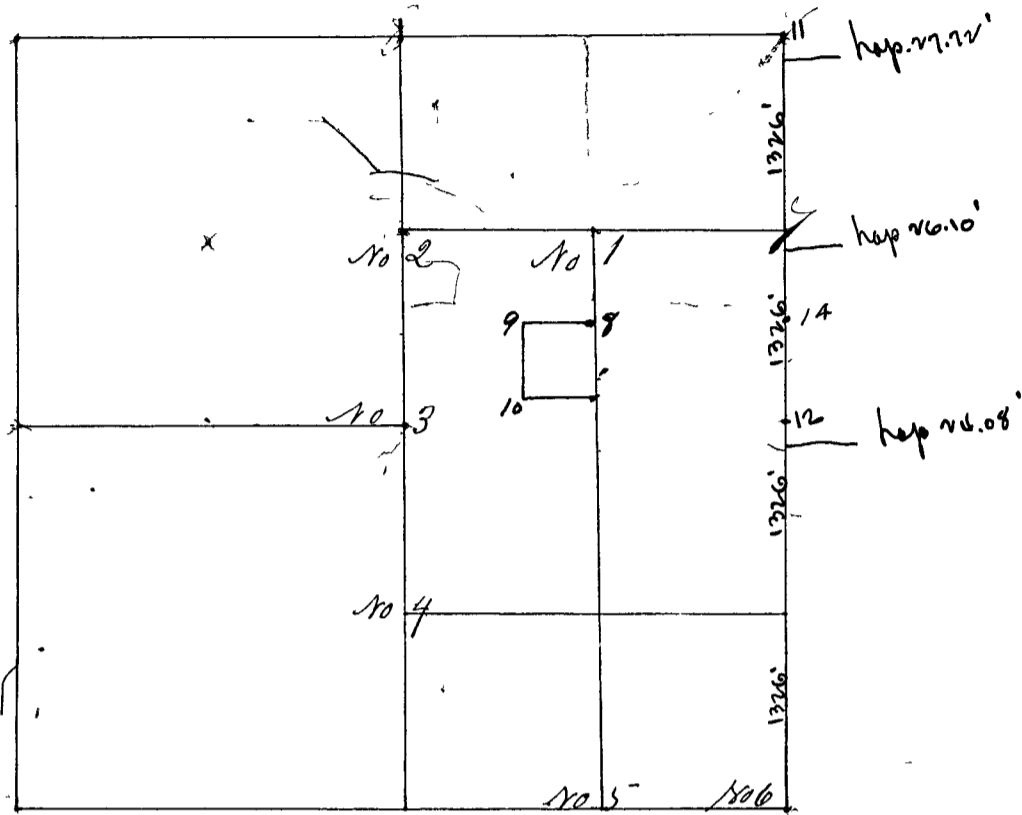


SECTION Twenty five (25), TOWNSHIP Thirteen (13)

Surveyed by Wm Herrow Deputy County Surveyor. Survey commenced Feb. 18th 1857 Verbal notice, E. Young & S. McKee, chain carriers. Chain-carriers & marker sworn. Corners taken from 1 to 6 inclusive at variation lines.



- Corners No 1 a Stone center N. E. qm. S. E. s.
- " " " (Wit Trees, Beech 12 N 40 E 23 links
- " " " Beech 8 S 73 E 33 "
- Corners No 2 a Stone N & S center line N 1/4 m.
- " " " White Oak 12 S 48 W 33 1/2 "
- " " " Maple 8 N 88 1/2 E 37 "
- Corners No 3 a Stone center of Sec. 25.
- " " " Maple 12 N 28 W 35 "
- " " " Elm 15 N 84 1/2 E 34 "
- Corners No 4 a Stone N & S center line S 1/4 m.
- " " " Beech 15 N 77 1/2 W 32 1/2 "
- " " " Beech 7 N 1 W 24 1/4 "
- Corners No 5. a Stone S line E 1/4 m corner.
- " " " Jack Oak 10 S 88 1/2 E 48 "
- " " " Maple 6 S 41 1/2 W 68 "
- Corners No 6 a Stone lettered S. E. sec. corner.
- " " " White Oak 8 N 81 1/2 W 56 "
- " " " White Oak 24 S 81 1/4 E 31 "

Further surveyed by Homer Hicks S. C. C. Ind. Oct. 24th & 25th and Nov. 10th 1873. Survey made at request of Samuel H. Potter. Parties consent

- Cor. No 2. Lost, reset Piece of R. R. Iron 2 ft long.
- " " " " " " a Bar Oak 14 S. 40 E. 78 links
- " " " " " " Do. 10 N. 76 1/2 W. 7 1/2 "