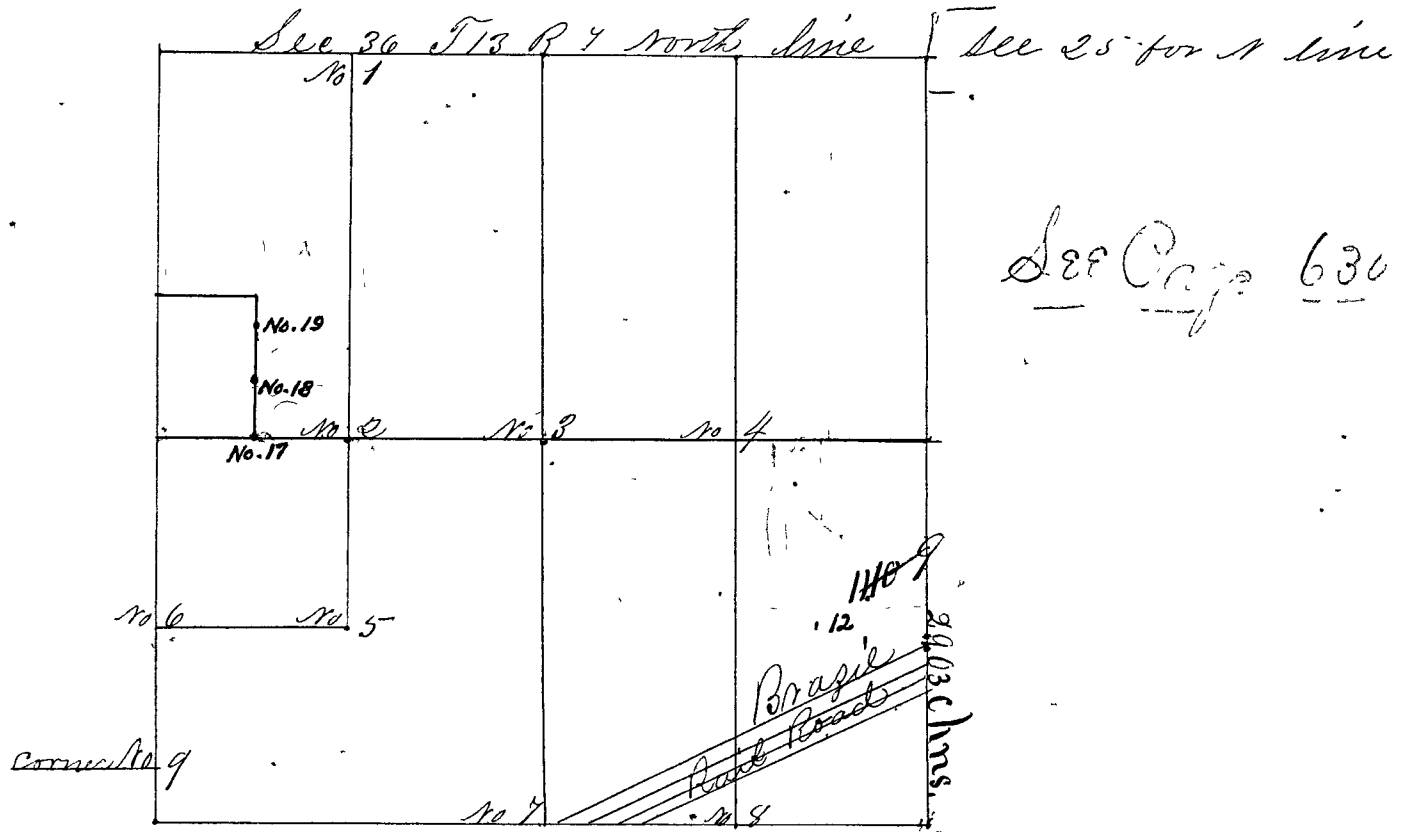


Surveyed by Wm. Heron, Deputy Co. Surveyor on mutual consent & written notice survey commenced & concluded March 17 & 18-1857.  
 John W. Reeder, S. Sumpter chain carrier George Chambers marker S. Sumpter assistant, all sworn according to Law.  
 Variation to Witness trees the same as lines &c.



- Corner No 1 a Stone N. S. line N 1/4 m corner  
 " " " (Wit. Trees) Sweet Gum 6 S 11 3/4 W 48 1/2 L.  
 " " " White-Oak 30 N 32 3/4 W 55 L.
- Corner No 2 a Stone C. E. & W. line N. 1/4 m. corner  
 " " " Black Gum 4 N 81 1/4 E 45 L.  
 " " " Hickory 4 South 166 1/2 L.
- Corner No 3 a Stone center sec. 36 T13 R 7  
 " " " Log wood 5 South 38 1/4 L.  
 " " " White Oak 24 East 40 L.
- Corner No 4 a Stone, E & W. center line E 1/4 m. c.  
 " " " Sassafras 5 S 85 3/4 E 78 L.  
 " " " Black Walnut 1 N 5-6 W 42 3/4 L.
- Corner No 5 a Stone center center of S. 1/4 m. sec.  
 " " " 3 Mulberries one marked 7 N 85 W 32 1/2 L.  
 " " " Oak Stump 24 N 5 E 96 1/2 L.
- Corner No 6 a Stone N. Sec. line. S 1/4 m. c.  
 " " " Sugar 6 S 71 1/2 E 66 1/4 L.  
 " " " W. O. Stump 30 N 24 1/2 E 97 L.
- Corner No 7 a Stone S. S. l. 1/2 mile corner.  
 " " " Sweet Gum 5 N 83 W 70 1/2 L.  
 " " " Jack Oak 12 N 75 1/2 E 99 L.
- Corner No 8 a Stone South S line E 1/4 m. c.  
 " " " W. Oak Stump 24 East 50 L.