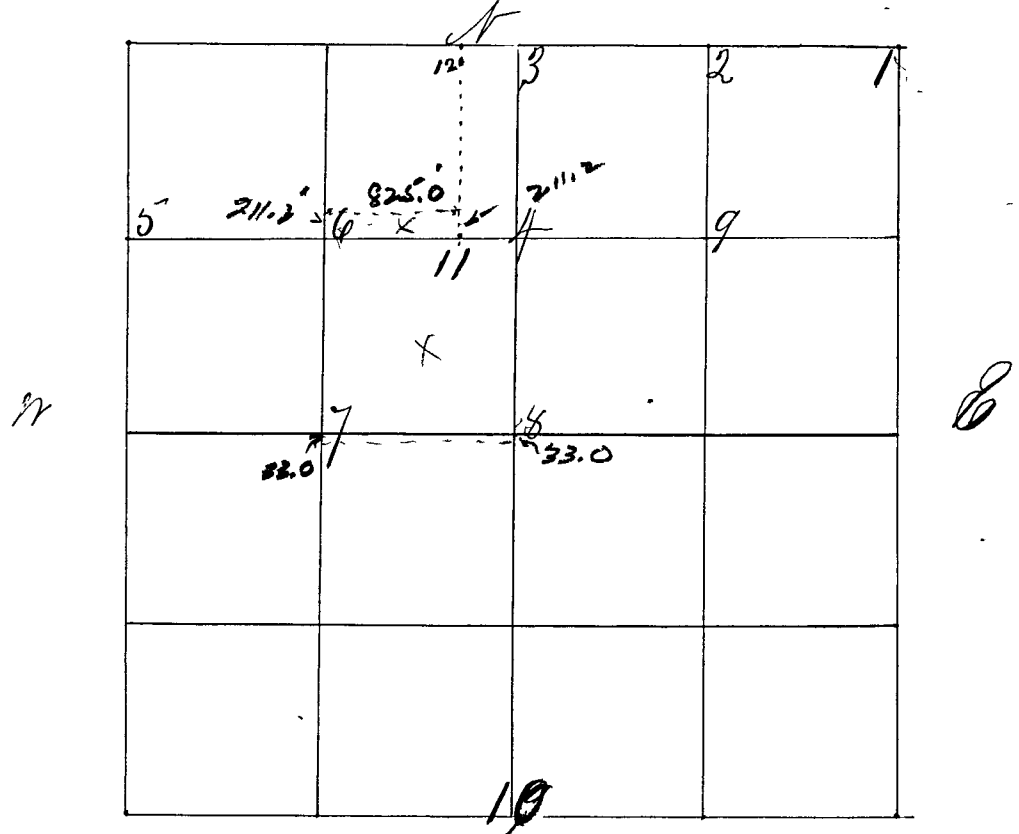


SECTION *Five* (4), TOWNSHIP *Five* (10)

Surveyed by George V. Goshorn, county Surveyor Apr. 5<sup>th</sup> 6<sup>th</sup> 7-1865  
Notice given by Henry Harden and Uias Wilkinson chain carriers  
& flagman sworn as Law directs and corners set from 1 to  
(Mistake parties concerned were not all notified)



- Cor. No 1 S. Stone 18 in.
- " " " Elm 16 N 32 W 5 lks
- " " " B. Oak 5 S 40 1/2 E 12 "
- Cor. No 2. Sand Stone 16 in long. (No bearing)
- Cor. No 3. Sand Stone 20 in. (No bearing)
- Cor. No 4. Sand Stone in two pieces. each 10 in. (No bearing)
- Cor. No 5. Sand Stone 18 in long (No bearing)
- Cor. No 6 S Stone 18 in (No bearing)
- Cor. No. 7 S Stone broken; each piece 10 in.
- " " " Jack Oak 10 N 78 W 16 lks
- " " " Jack Oak 12 in N 11 1/2 E 26
- Cor No 8 S. Stone 18 inch
- " " " No. Locust South 21 lks
- " " " Hickory N 84 E 9 1/2 lks

(Afterwards discovered parties concerned were not all  
lawfully notified; hence the above made void)  
Geo V. Goshorn

Corner No 10 set by P. S. Suther S. & C. October 28<sup>th</sup> 1868 by  
request of Henry Harden and James W. W. allow from "Big Bearing"  
Corner 10 S 1/2 a Sand Stone 16 marked 1/4 S 4, 9 from which  
" " " w Hickory 4 N 45 E 58 1/2  
" " " w Elm 7 N 20 1/2 W 83 1/2

Witness my hand This 28<sup>th</sup> day of October 1868  
P. S. Suther,  
Surveyor