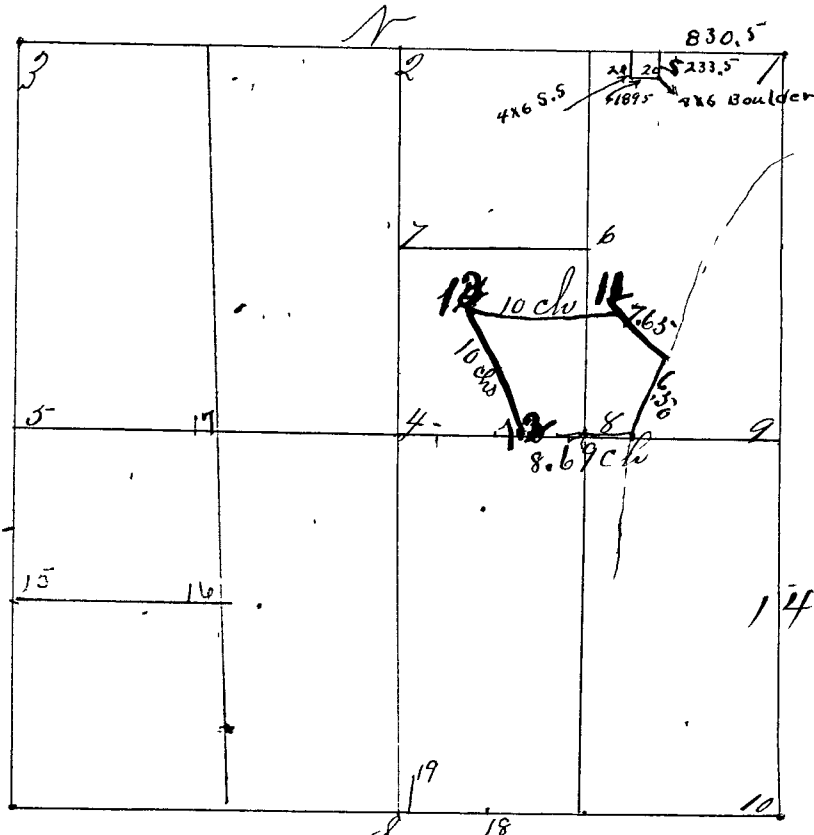


Surveyed by P. E. Luther S. 6, 6, March 15<sup>th</sup> 19<sup>th</sup> 20<sup>th</sup> etc. A. D. 1867  
 chain-carriers. Noah Latham, and Charles Trotter, Peter Harris  
 flagman in part and Lewis Jones. flagman the rest of the time  
 All sworn as the Law provides. Notice given by three weeks  
 publication in the Weekly Aurora Borealis previous to the  
 time of commencing. Var 4: 45 on N & S lines and 4: 25 on E & W lines  
 Bearings at 7: 25 Var corners set from 1 to 10



- Corner No 1 Sand Stone N.E. corner
- " " " Witness an Elm 14 N 21 E 27 lbs
- Corner No 2 N.E. Sand Stone. (No bearings near)
- Corner No 3 N.W. corner Sand Stone
- " " " Witness an Ash 6 84° 72.5 lbs
- " " " Jack Oak 8 N 18 E 38 lbs
- Corner No 4 Middle Sand Stone
- " " " Witness White Oak 36 and 86 78 3 lbs
- " " " Beech 30 N 70 E 82
- Corner No 5 West 1/2 Mile Sand Stone
- " " " Witness White Oak 14 N 21 W 36 lbs
- " " " Hickory 20 S 3 1/2 W 71 "
- Corner No 6 Center of N.E. quarter Sand Stone 22 in long
- " " " No bearing trees near
- Corner No 7 Sand Stone
- " " " Witness, Hickory 18 N 85 W 25 3/4 lbs
- Corner No 8 Sand Stone (No bearings near)
- Cor No 9 E 1/2 Mile cor. a Sand Stone marked 1/2
- Witness a Black Walnut 36 N 59 E 211 lbs
- No other taken (orig trees found)