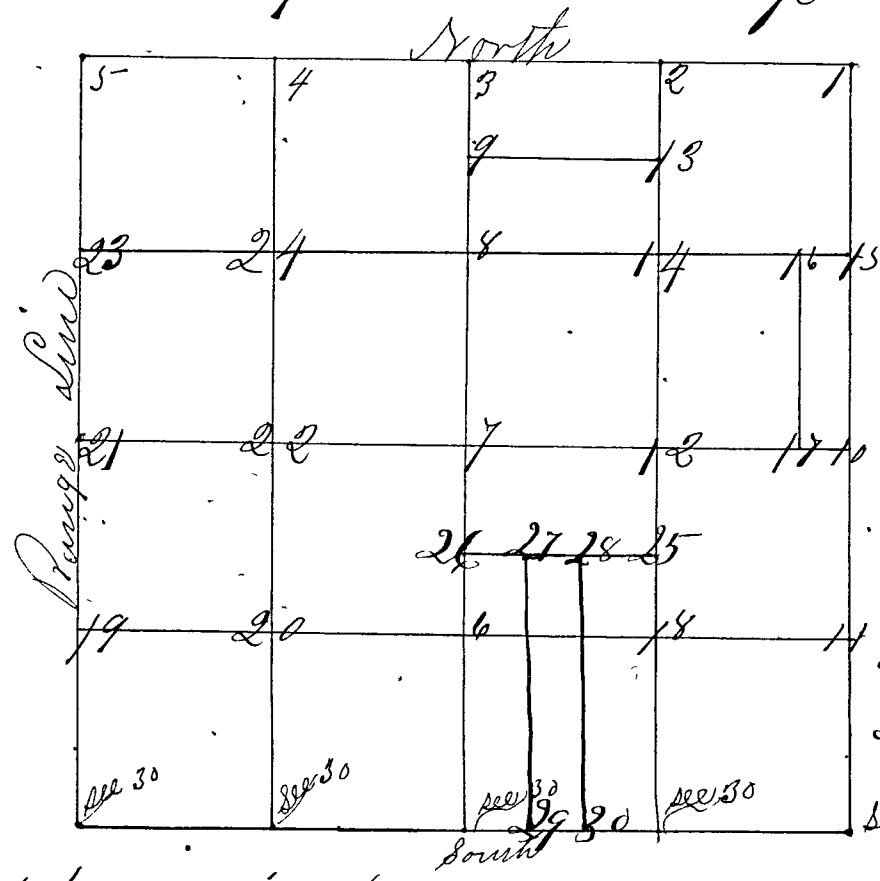


Surveyed by Peter F. Luther sur. l.c. June 11th 12th & 13th 1867 and corners established from 1 to 24 Notice given by all parties interested being present and agreeing to survey (Present in person and by agents) Vinyard Church and Pesky cooperider chain carriers. Michael Shely Ottman and Geo. M. cooperider flagman, all sworn as the Law provides. Bearings taken at 4.50

See Record No. 2 P West



Corners 25, 26, 27, 28. 29 & 30. set by Homer Nicks Sur. Clay County March 3rd. 1874. East by request of John W. Miller, G. W. cooperider, George Schley & Mary E. Miller, Chamber & Flagman Sworn.

- Corner 1 Set by running 1/2 on dividing distance N.E. cor of section a S.S. 17 in [No 81718, 1920-10, 6] a Black Walnut 7 N 17 865 lbs
- " " " " a do. 6 N 43 8 110 lbs
- Corner 2 a Sand Stone 16 in Queen's ware at bottom on 1/4 19
- " " " " a White Oak 36 20 8 92 lbs.
- " " " " a do. 30 N 47 N 97 lbs.
- Corner 3 N 1/2 m cor. S. S 12 on 1/2 19 (Original bearings found)
- " " " " a Hickory 6 86 7 N 7 1/2 lbs.
- " " " " a Jack Oak 12 N 11 N 111 lbs.
- Corner 4 a Sand Stone 14 on 1/4 19 (in swamps)
- " " " " an Ash 30 84 1 N 17 lbs.
- " " " " a do. 8 N 8 8 33 lbs.
- Corner 5 N.W. cor a S.S. 20 in m. S 18 19 - 10 - 6.
- " " " " a Beech 14 in 8 29 1/2 N 13 lbs.
- " " " " a White Oak 24 N 8 N 53 "
- Corner 6 a Sand Stone 14 on 1/4 S. 19
- " " " " a White Oak 48 8 23 N 67 lbs.
- " " " " a Beech 24 N 87 N 69 1/2 lbs.
- Corner 7 Center of sec. a S.S. 16 in on 1/2 S 19, 10, 0
- " " " " a Maple 13 8 5 1/2 N 90 lbs
- " " " " a Sweet gum 6 8 25 8 7 7 lbs.
- Corner 8 a S.S. 12 in on 1/4 S 19 -
- " " " " an Elm 30 8 5 4 8 3 1/2 lbs.