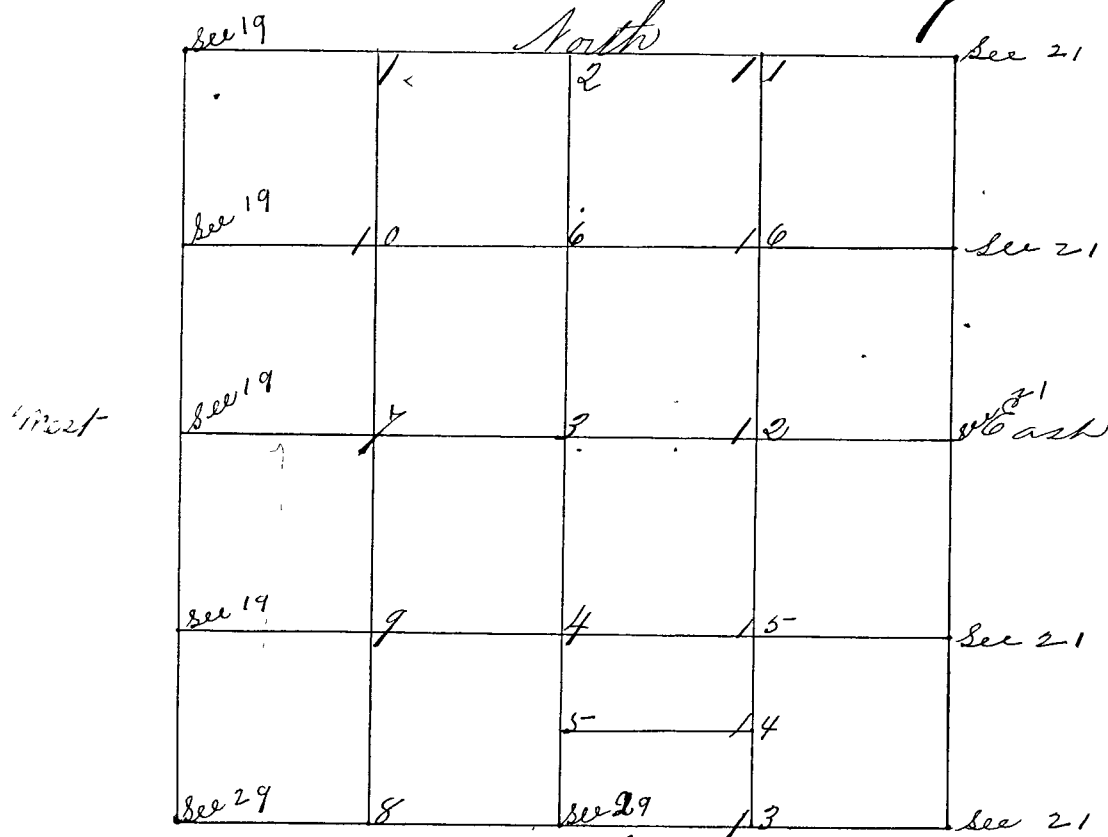


Surveyed by Peter J. Luther Surveyor of May County Indiana September the 2nd & 3rd 1867 after all Parties consenting to said survey and lines perpetuated and corners established from one to sixteen. Chain carriers, arborers and flagmen all sworn as the Law directs. Bearings taken at 4.30' Variation



- Cor. 1. a Sand Stone ^{South} 21 in m 1/4
- " " " a White Oak 36 S 42 W 92 lbs
- " " " a Kerckory 20 N 53 E 71 "
- Cor 2 a Sand Stone 18 m 1/2 N 1/2 m cor Equi divide
- " " " a Sand Stone 18 1/2 E ast. 40 "
- Cor 3 a Sand Stone 12 in m S 20 ben of Sec.
- " " " a Poplar 20 in S 36 W 58 "
- Cor 4 a Sand Stone 10 m 1/4
- " " " a Maple 4 S 1 1/2 W 49 "
- " " " a Sweet Gum 4 S 73 1/2 E 50 "
- Cor 5 a S. S. ^{115 m x} 40 Rods S of 4. No trees near.
- Cor 6 a Sand Stone 1 1/2 in m 1/4
- " " " a White Oak 24 S 43 E 15 "
- Cor 7 a Sand Stone 24 marked. 1/4
- " " " a Kerckory 18 S 28 E 100 "
- Cor 8 a Sand Stone 13 in m 1/4
- " " " a White Oak 24 N 54 E 58 "
- Cor 9 a Sand Stone 20 in m 1/4
- " " " a White Oak 18 S 13 1/2 E 73 "
- " " " a Jack Oak 12 N 40 E 68 "
- Cor 10 a Sand Stone 20 in m 1/4.
- " " " a Sassafras 6 S 40 W 4 "
- Cor 11 a Sand Stone 20 in m 1/4
- " " " a White Oak 12 1/2 E 68 "