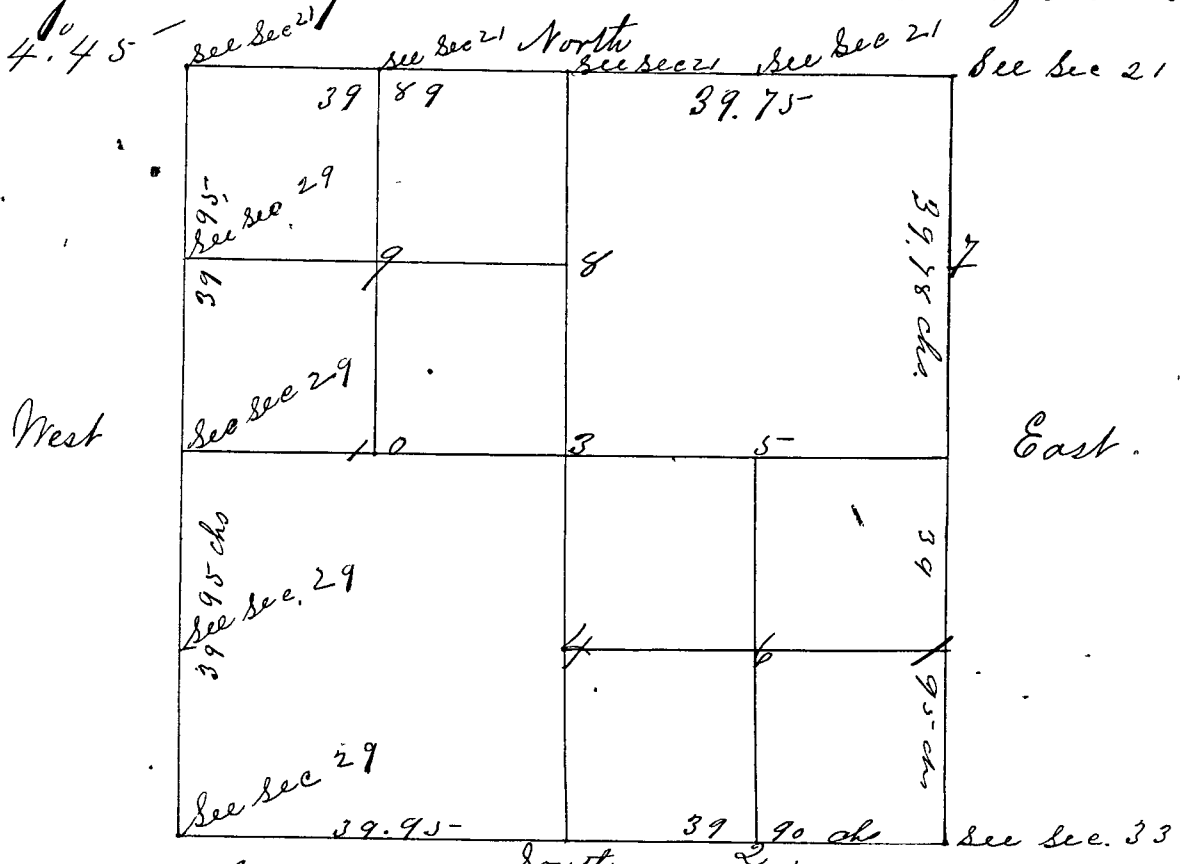


Surveyed by P. T. Luther Surveyor of Clay County Ind. April 15. 1867 and corners set from 1 to 10. Notice given by three weeks publication in the "Clay County Weekly Aurora Borealis" John Sieckly flagman. Lewis Schlagas Atman. Peter Infield & Samuel Baumgartner chain carriers first day. Peter Infield & John Sholey chain carriers the rest of the time Bearings taken at 4.45



- Corner No 1. a Sand Stone 32 in <sup>South</sup> m 28 10.6. Original bearings found.  
 " " " Witness. a Sand Stone 25 in S 61 E 26 3/4"
- " " " a do. 27 N 43 W 38 1/2"
- Corner No 2 a Sand Stone 31 in marked 10 28  
 " " " Witness. Sand Stone 18 in N 44 W 34"
- " " " a do. 27 S 87 E 25"
- Corner No 3 a Sand Stone marked 28  
 " " " Witness. Sand Stone 24 in S 45 W 30 1/2"
- " " " a do. 23 N 45 E 33"
- Corner No 4 a Sand Stone 27 in m 14  
 " " " Witness. a Sand Stone 22 in N 38 E 1 1/2"
- " " " a do. 19 S 48 W 25"
- Corner No 5 a Sand Stone 26 in marked 14  
 " " " Witness. a Sand Stone 32 N 72 E 20 1/2"
- " " " a do. 21 S 83 W 18"
- Corner No 6 a Sand Stone 34 in marked 14 28.  
 " " " Witness. a Sand Stone 18 in S 68 E 22"
- " " " a do. 24 N 48 W 24"
- Corner No 7 a Sand Stone 25 in m 14 28, 10, 6  
 " " " Witness. a Sand Stone 25 in N 42 W 30"
- " " " a do. 30 S 42 E 36"
- Corner No 8 a Sand Stone 41 in m 14 28, 10, 6  
 " " " Witness. a Sand Stone 28 in N 80 W 25 1/2"