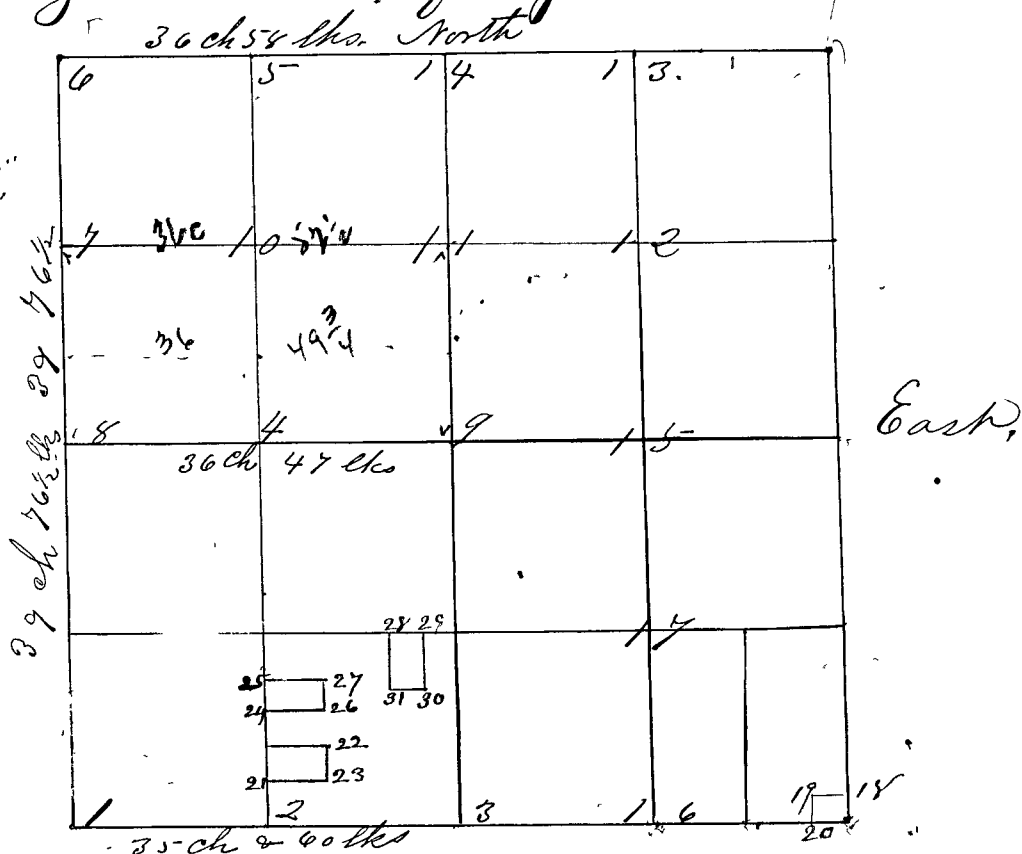


Surveyed by George V. Goshorn C.S. April 3 & 4 - 1866, and corners set as follows. Notice given by three weeks Publication in the "Aurora Borealis" John Owens & Henry Shidler chain carriers Jacob Storm flag bearer, all sworn as Lawdreds

See Page 124 of Record No. 2



- Corner No 1 S.W. cor of Sec 30 set Sand Stone marked S 31.30
- " " " Original Beech S 73 N 15 instead of N 73 W 15 - added Poplar 15 N 4 1/4 E 81 lbs Beech 30 S 87 E 58 "
- Cor " 2. Cen of S. line of S W 1/4 Sec 3 and Stone m 1/6 S. White Walnut 12 S 3 1/2 W 4 1/2 lbs Gum 20 S 6 1/2 W 33 "
- Cor " 3 South 1/2 m cor "old rotten Oak" agreed to as Original witness by John Coopride Henry Coopride Ambrose Phipps saying it was taken as such by other surveyors when plane to be seen set Sand Stone m 1/4 S. Sycamore 10 N 26 E 34 1/2 " Sycamore 15 S 20 1/2 W 54 1/2 "
- Cor " 4 Cen South line N.W. 1/4 Sand Stone m 1/6 S. W. Oak 20 S 55 W 56 1/2 " Poplar 30 S 53 1/2 E 49 "
- Cor " 5 Cen N line of N W 1/4 S Stone m 1/6 S. Beech 8 N 74 1/2 E 44 "
- Cor " 6 N.W. cor of Sec 30 set by taking 100 lbs cap South from Original cor of S 24 & 25 R 7 found by Original Beech witness at marks chopped out Sand Stone m S 30. 19. Ash 15 N 8 E. 44 " Hockory 20 S 63 W 111 "