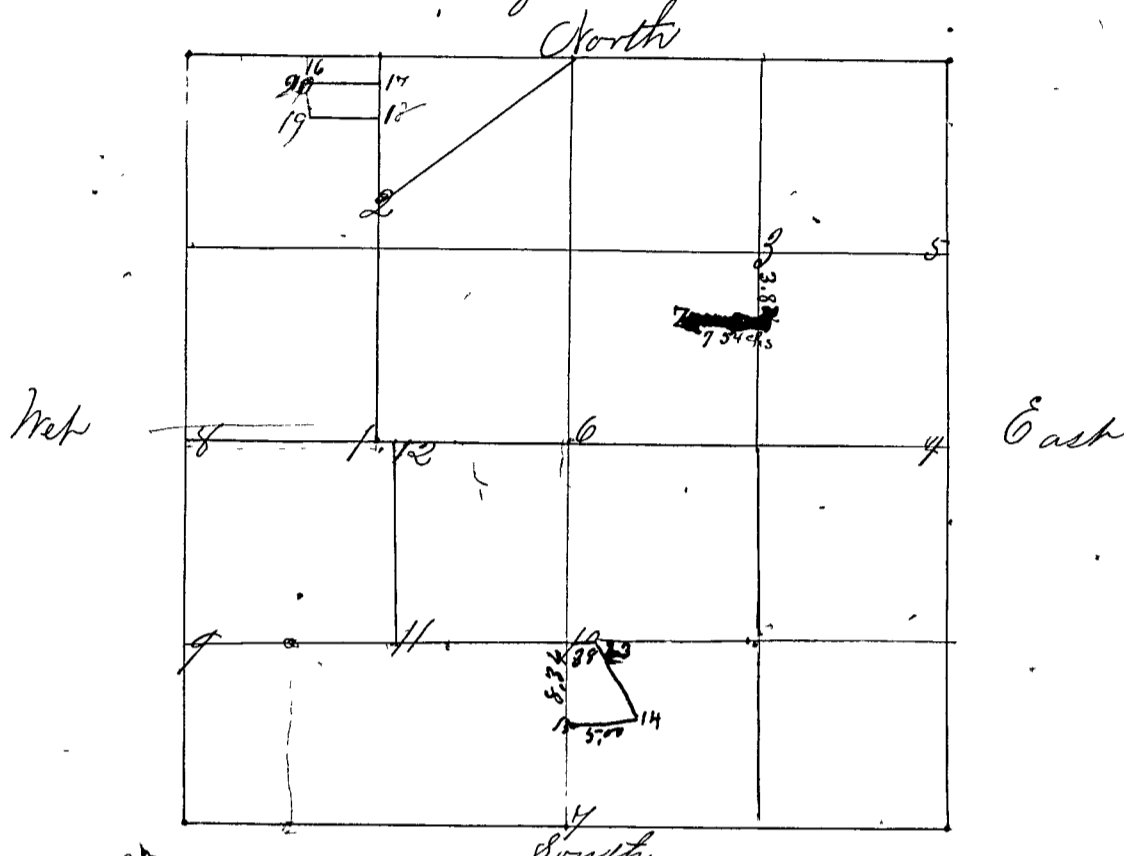


Surveyed by Edward Braden, Deputy Surveyor of Clay Co Ind. commencing November 15th 1866, and continuing from day to day until said survey was completed chain carriers 1st day Job H. Buckallew & William Strenagle, subsequent days chain carriers were Wm Strenagle & Les Branninberg. E. Hoopriider flagman and John Hoopriider Sen. Atman. All of whom were sworn as the law directs.



160
17
115
132
28

- Cor. No 1 Middle N.W. 1/4 South side Sand Stone. (No bearings near)
- " " 2 63 Rods & 10 1/2 lks South of N.E. corner of the N.W. 1/4 Sand Stone
Walnut Sugar 10 N 20 E 60 1/4 lks
- " " 3 N.W. 1/4 Sand Stone
Sugar 15 N 10 1/2 W 15 lks
Dog wood 6 S 22 W 7 "
- " " 4 Middle Sec. E side Sand Stone
Sugar 20 S 52 W 93 "
Walnut 58 71 E 42 1/2 "
- " " 5 Middle N.E. 1/4 East side Sand Stone
Walnut Beech 5 N 38 W 20 6 1/2 lks
Beech 16 S 53 W 205 "
- " " 6 Center of Section Sand Stone. (No bearings near)
- " " 7 Middle " " South side Sand Stone
Walnut Black Walnut 8 S 14 W 54 lks
Beech 24 N 15 W 31 "
- " " 8 Middle Sec. West side Sand Stone (no bearings)
- " " 9 S.W. 1/4 " " Sand Stone
Walnut Poplar 8 S 17 W 5 lks.
Black Oak 3 S 42 W 9 "
- " " 10 Middle S.W. 1/4 E side Sand Stone
Walnut White Walnut 5 S 72 W 5 lks