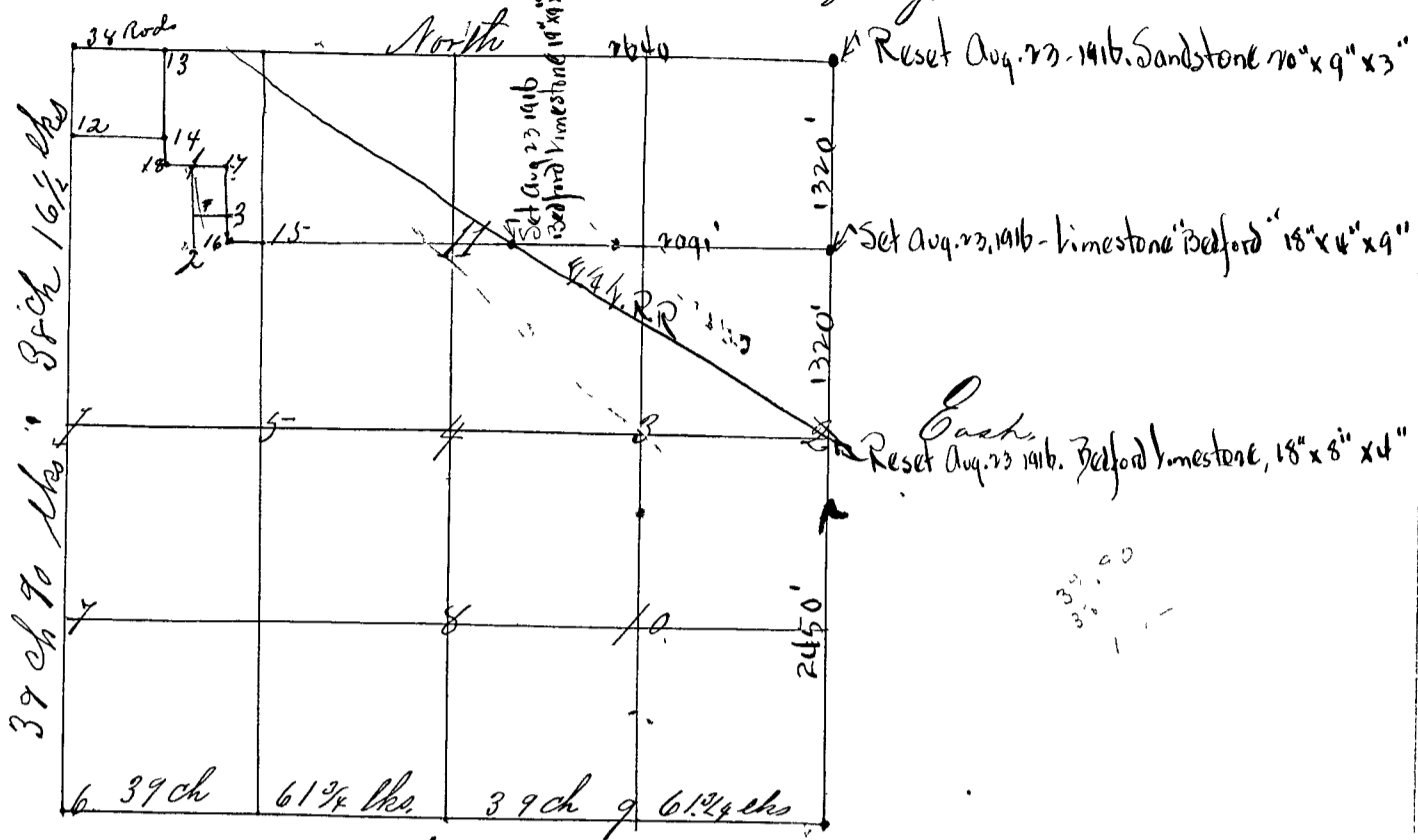


Surveyed by George W. Goshorn C.S. April 6th & 7th 1866 corners set as follows. Parties interested consent chain carriers & flag man sworn as law direct



- Cor. No 1 West 1/2 mile cor set by agreement - to position of old ^{Measures} ~~Measures~~
- " " " which were rotted away Sand Stone. marked 1/4 S.
- " " " Poplar 15 - N 5 1/2 E 118 "
- " " " Hickory 5 - S 42 W 92 "
- " " " 2 See Sec. 33. One witness added N.E. cor of "A S Fair's Wood" S 88 1/4 W 113 lbs
- " " " 3 Cen. S. line. N.E. 1/4 S Stone on 1/16 S.
- " " " Hickory 25 - S 53 W 50.
- " " " W Oak 30 - N 49 1/2 W 73 "
- " " " 4 Cen. Sec. set at equi dist - on straight line stone Sand Stone 1/4 S.
- " " " Hickory 20 - S 20 1/2 E 65 "
- " " " W Oak 40 - N 11 1/2 E 104 "
- " " " 5 Cen. S line NW 1/4 S Stone on 1/16 S
- " " " Sycamore 48 - N 11 1/4 E 139 "
- " " " " No other bearing "
- " " " 6 S.W. cor of sec 32 "Old Poplar stump and Hickory roots
found proper dist - & course; taken for Original corner Sand Stone
Lm 8 32.51/2
- " " " W. Oak 30 - S 45 W 77 "
- " " " Beech 15 - N 47 W 58 1/2.
- " " " 7 Cen. N. line S.W. 1/4 Sand Stone on 1/16 S.
- " " " Beech 20 North 19 lbs.
- " " " W. Oak 15 - S 75 W 61 1/2 "
- " " " 8 Cen. E. line S.W. 1/4 S Stone on 1/16 S.
- " " " Hickory 38 - S 69 W 51 1/2 "
- " " " Beech 15 - N 48 W 29 "
- " " " 9 Cen. S. line S.E. 1/4 S Stone on 1/16 S.
- " " " W. Oak 24 - N 42 E 136 1/2 "