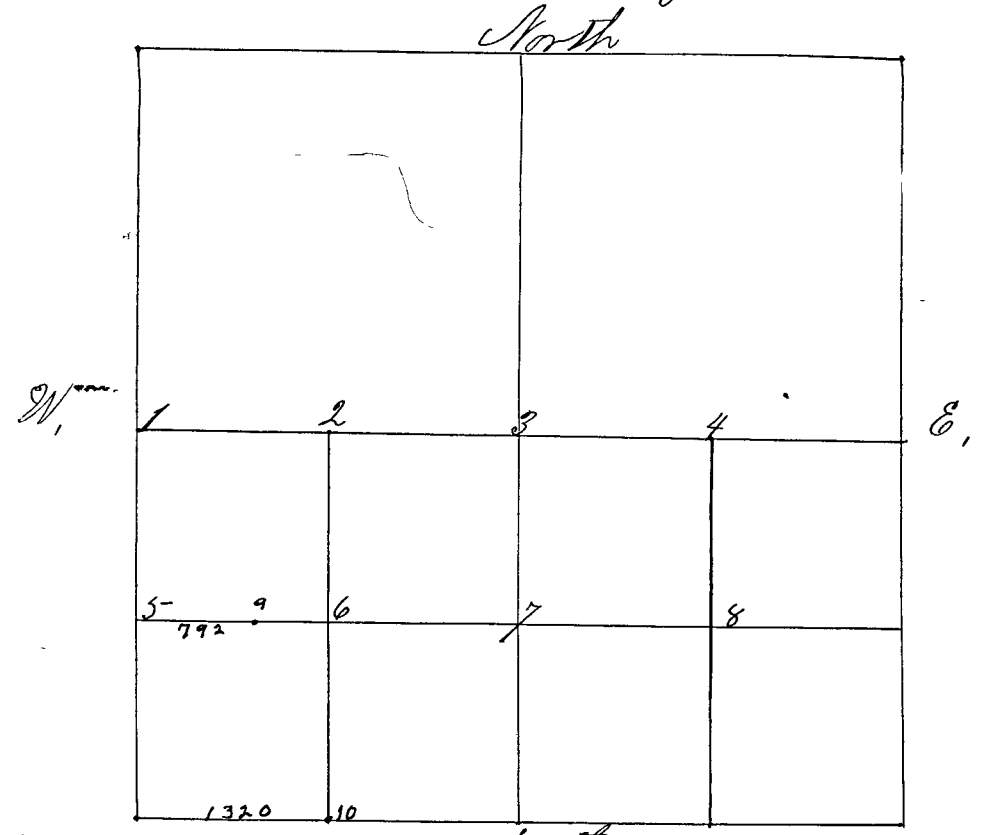


SECTION *Nine* 19, TOWNSHIP *Nine* (9)

Surveyed by John H. Davis County Surveyor, May 31st & June 1st 2nd 3rd 1859 Corners set from No 1 to



- No 1 Lime Stone 14 S. ^{South} Blk Oak 6 in N 56 E 26 lbs. ^{near}
- " " " " Blk Jacks in S 34 W 19 lbs.
- " " " " Lts. witness near for cor E 1
- " 2 Lime Stone marked with a crop stone +
- " 3 Lime Stone 1/4 S. B. Oak 10 in S 57 E 68 lbs
- " " " " W Oak 24 in N 20 W 53 lbs
- " 4 Sand Stone marked X. Blk Oaks 12 S 64 W 18 lbs.
- " " " " Blk Oaks 18 S 20 E 29 lbs
- " 5 Lime Stone 15 in long. Jack Oaks 10 S 19 E 41 lbs
- " " " " Jack Oaks 10 S 70 E 32 lbs
- " 6 Lime Stone. B. Oak 4 S 3 E 20 lbs
- " " " " B. Oak 5 N 45 W 13 lbs.
- " 7 Lime Stone + Hickory 14 S 34 W 23 1/4 lbs.
- " " " " B. Oaks 10 S 48 E 42 lbs
- " 8 Sand Stone 18 S. Hickory 6 S 9 E 28 lbs.
- " " " " B. Oak 10 S 73 30 W 25 1/2 lbs.

Further surveyed April 16-1953 By Henry G. Dorman. Cecil Wiggins chairman

#9 an iron pin 1" in dia. 15" long set 792 E of cor. #5

#10 " " 1" in dia 15" long set at the S.E. cor. of SW 1/4, SW 1/4 sec 9 T 9 N R. 7 W.