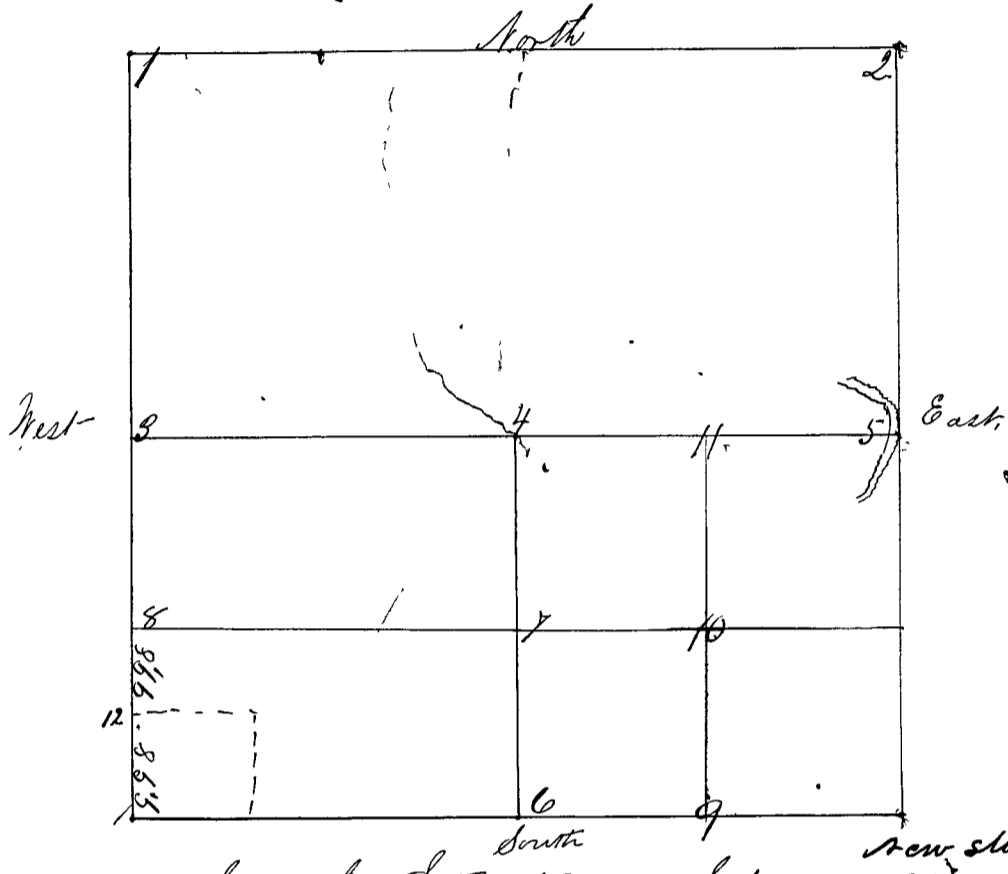


SECTION *NW 110*, TOWNSHIP *Nine 9*

Met June 25th 1867 pursuant to notice that was given by three weeks' Publication in the legal County ^{Meeting} Aurora Bonialis, some of the parties being sick the survey was adjourned until August the 12th 1867. Then surveyed by P. T. Luther Sav. & Co. August 12, 13, 14 Henry Bolick and Christopher Trinkle chain carriers Robert D. O. Hengate flag man and Daniel Froch Arman, all sworn as Law directs Bearings taken at 4.30.



- Cor 1 N. W. cor @ Sand Stone 12 m S 10.112 34. 9. 7. New stone deposit by milliner Sept 12 1871
- " " " " " " " "
- " " " " " " " "
- Cor 2 N. E cor. found "O B" " " " " " " " "
- " " " " " " " "
- Cor 3 N. E cor found "O B," " " " " " " " "
- " " " " " " " "
- Cor 4 Center of Sec a S. S. 15 m S 10 . 9 . 7 " " " " " " " "
- " " " " " " " "
- Cor 5 a "Maple Post" 236 lbs west of proper place on the " " " " " " " "
- " " East & West line and on the west bank of "Eb River" set " " " " " " " "
- " " own on account of "River being in way" of the proper place. " " " " " " " "
- " " (Witness) " " " " " " " "
- " " " " " " " "
- Cor 6 S ¹/₂ m cor "Equi Dist." " " " " " " " "
- " " " " " " " "
- " " " " " " " "