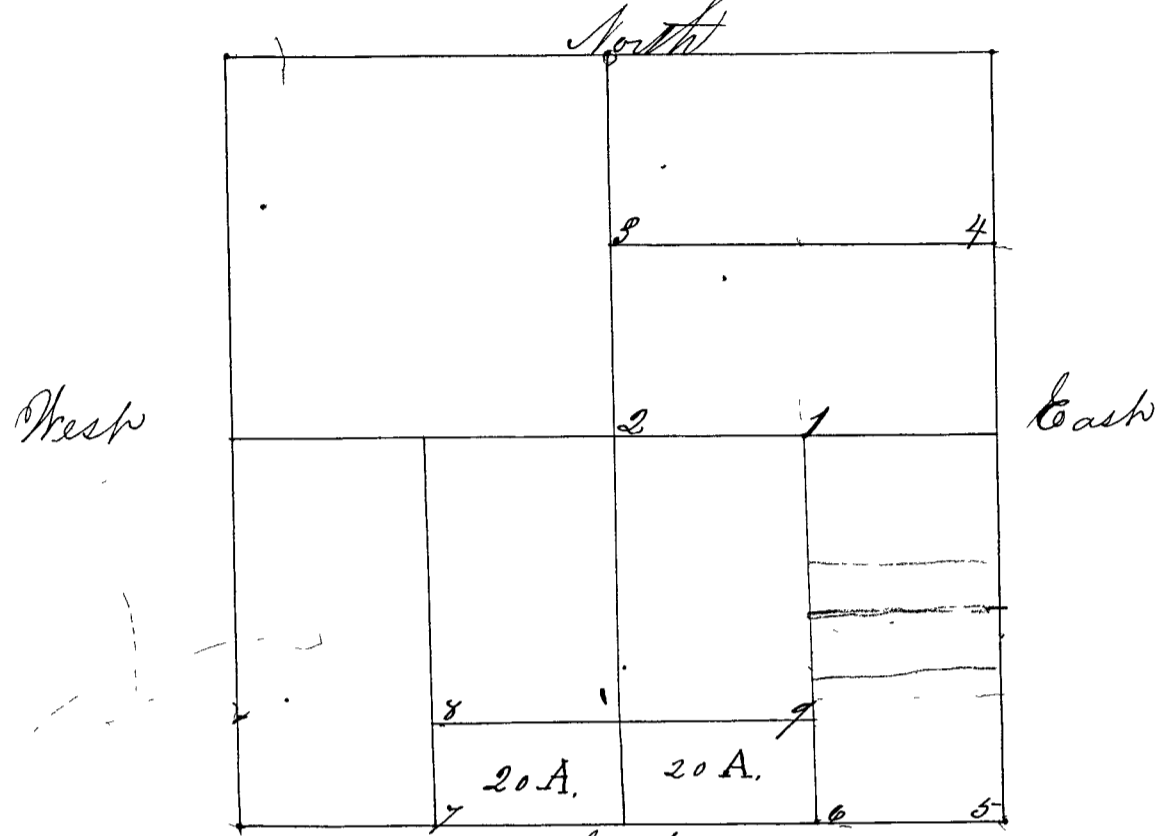


Surveyed by P. T. Luther Surveyor of Clay County Indiana.
October 9. 10 11 & 12th 1867 after three weeks' Publication in the "Weekly
"Aurora Borealis" Harrison Dalgas and John W. Baker chain-
carriers. All hands sworn as the Law directs. Corners set ground 169
Bearings taken at 4° 30' Var.



- Cor 1 a Sand Stone 18 in m 14
an Elm 12 S 4 1/2 N. 58 1/2
a Maple 15 N 88 E 35"
- Cor 2. Center of Sec. a S. S. 5 in m 8. 14 "Two shell at side"
a Burr Oak 14 N 33 E 35"
an Elm 20 S 19 1/2 E 13"
- Cor 3 a Sand Stone 21 in m 14
a Beech 22 N 39 N. 22"
a Black Walnut 12 S 128 81
- Cor 4 a Sand Stone 16 1/2 in m 14
a Hickory 20 N 36 1/2 N. 30"
a Sweet Gum 4 S. 41 E 60"
- Cor 5 S. E. cor. a Sand Stone 18 in m 313. 14. 23. 24 79 R. 7.
Found the Original bearings look one. ^{True witness}
a Hackberry 5 N 41 N. 16"
- Cor 6 a Sand Stone 16 in m 14
a Hickory 5 N 3 1/2 N. 13"
an Elm 3 S. 45 1/2 E. 15"
- Cor 7 a Sand Stone 24 m 18
an Elm 22 S 45 N. 34"
a Sour Oak 13 N 21 E 45"
- Cor 8 Forty Rods & ~~7~~⁵ lbs N of 7 a S. S. 20 m 16
an Elm 24 S 50 1/2 E 17 1/2
a Sour Oak 13 S 18 N 14"