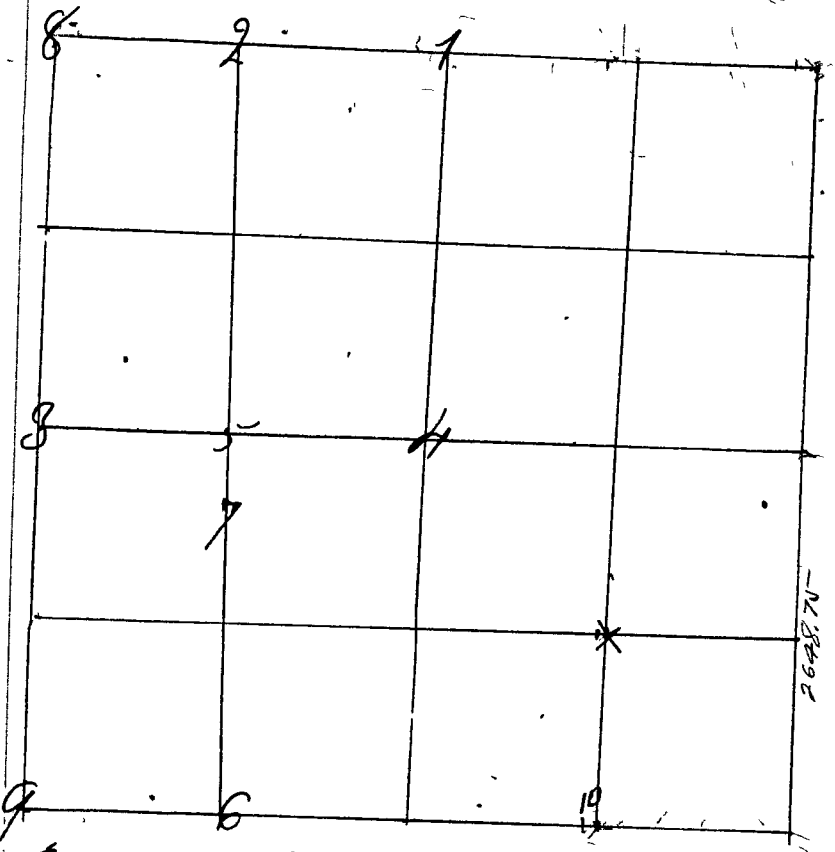


Surveyed by M. B. Christ Surveyor day a. rid on Sep 16 1871
 done by request of Wells Thornton, Thase Thornton -- Murdoch Bruce
 Chambers and Edmund Shigley



- Cor No 1 Quarter sec cor on North line sand stone } maple 3.875-6.8 107
- " " 2 Middle North line N W qtr @ piece of Hill stone East of 1/2 cor W 83 43 1/2 M
- " " 3 Quarter section cor on West side of sand stone } Oak 14 S 31 1/2 W 43 1/2 M
- " " 4 Center of section sand stone } Span Oak 16 N 26 25-
- " " 5 Center of West half of ^{S. Stone} Maple 10 N 89 1/2 W 127 1/2
- " " 6 Middle of South line S. W. qtr sand stone } Span Oak 4 S 30 1/2 E 202 1/2
- " " 7 Center of West line corner of N E S W qtr sand stone Hackberry S N 42 W 22 3
- " " 8 N W cor of sec sand stone M 54 1/2 S } of Oak 8 N 46 W 50 1/2
- " " 9 S. W. cor sec sand stone on 45-73.10 (O.B. Ford) M. B. Christ Surveyor

~~Further surveyed in 5th qtr May 20th 1908 by H. C. Gardiner Hayburn Cor~~
 set stake at #10 no witness
 " " at " " " "

Further surveyed by O. J. Jenkins Dec. 11-1928
 cor # 10 set iron pin 1" in diameter and 2' long
 witness Black Walnut 6" in diameter on line 437' north